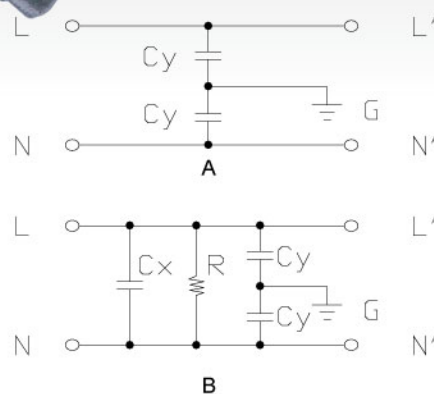
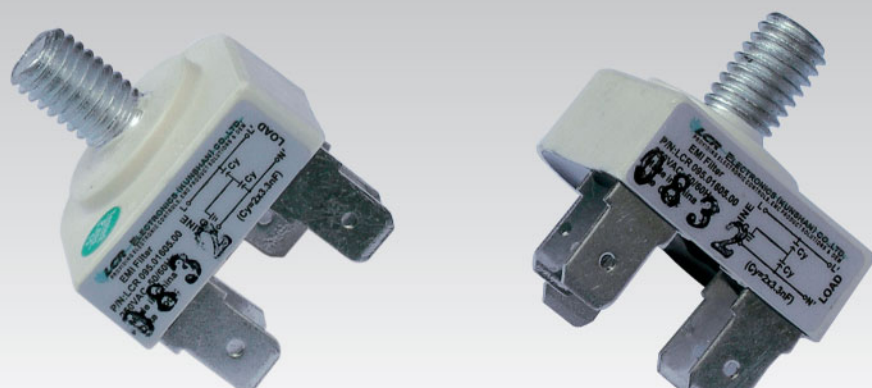


# 095/06

## General, Low Size and Costs White Goods Filters

### RoHS



095/06 - Electrical Schematic

### Features

Low leakage current, small and compact, EMI capacitor filter.

### Typical Applications

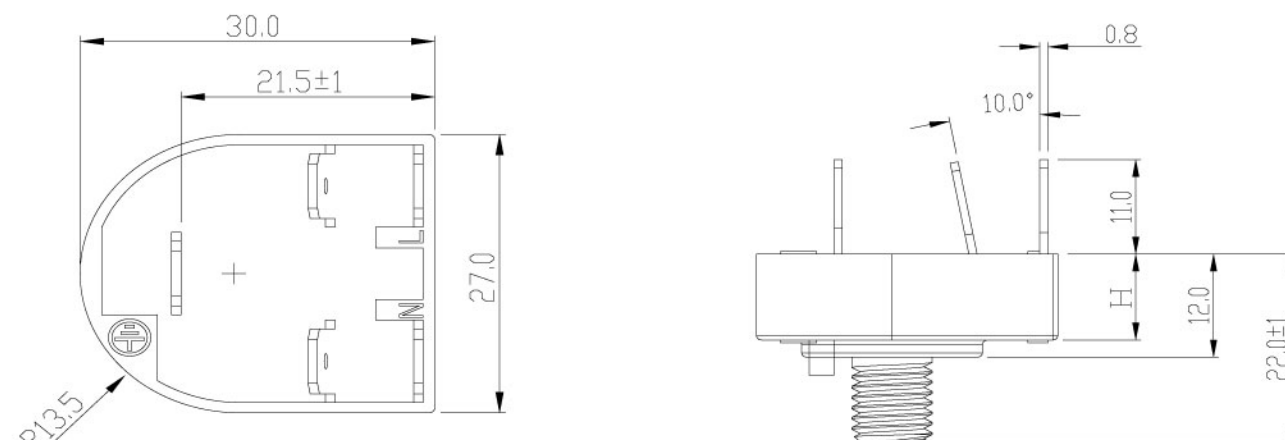
Washing machines and other light white goods.

### Technical Data

Rated Voltage Max. (V)	250VAC	Leakage Current	
Rated Current (A)	10 - 16A @ 40°C	@ 250 VAC 50Hz	0.63mA Max.
Operating Frequency (Hz)	50 / 60Hz	IP Standard	68
Hipot Rating		Climatic category	25 / 100 / 21
Line to Line	1450V DC	Flammability	UL 94V-0
Line to Ground	2250V DC		
Case	Plastic Resin		
Packaging Quantity	375 pcs per carton		

Model No.	Rated Current @ 40°C	Cx (uF)	Cy (nF)	H (mm)	Schematic	Unit Weight (g)	Terminal Options	
							In	Out
095.61601.00	16.0		1.0	10.0	A	100.0	Faston 6.35*0.8	Faston 6.35*0.8
095.61602.00	16.0		2.2	10.0	A	120.0	Faston 6.35*0.8	Faston 6.35*0.8
095.61603.00	16.0		3.3	10.0	A	100.0	Faston 6.35*0.8	Faston 6.35*0.8
095.61604.00	16.0		4.7	10.0	A	120.0	Faston 6.35*0.8	Faston 6.35*0.8
095.61605.00	16.0	0.1	1.0	16.0	B	120.0	Faston 6.35*0.8	Faston 6.35*0.8
095.61606.00	16.0	0.1	2.2	16.0	B	120.0	Faston 6.35*0.8	Faston 6.35*0.8
095.61607.00	16.0	0.1	3.3	16.0	B	120.0	Faston 6.35*0.8	Faston 6.35*0.8
095.61608.00	16.0	0.1	4.7	16.0	B	120.0	Faston 6.35*0.8	Faston 6.35*0.8

### 095 / 06 Mechanical Outlines For reference only



All dimensions in mm, 1 inch=25.4 mm

### Insertion Loss in dB Measured in a 50Ω System

Model No.	Common Mode IL (Frequencies in MHz)							
	0.05	0.1	0.15	0.5	1.0	5.0	10.0	30.0
095.61601.00	1.0	1.5	2.0	7.0	10.0	20.0	25.0	25.0
095.61602.00	1.0	1.5	2.0	7.0	10.0	20.0	30.0	30.0
095.61603.00	1.0	1.5	2.0	7.0	12.0	26.0	32.0	35.0
095.61604.00	1.0	1.5	2.0	7.0	12.0	28.0	35.0	35.0
095.61605.00	2.0	5.0	5.0	10.0	10.0	20.0	25.0	25.0
095.61606.00	2.0	5.0	5.0	10.0	18.0	20.0	30.0	30.0
095.61607.00	2.0	5.0	5.0	10.0	18.0	26.0	32.0	30.0
095.61608.00	2.0	5.0	5.0	10.0	18.0	28.0	35.0	35.0

Model No.	Differential Mode IL (Frequencies in MHz)							
	0.05	0.1	0.15	0.5	1.0	5.0	10.0	30.0
095.61601.00	2.0	5.0	8.0	12.0	18.0	25.0	28.0	30.0
095.61602.00	2.0	5.0	8.0	15.0	20.0	25.0	28.0	30.0
095.61603.00	2.0	5.0	8.0	18.0	25.0	30.0	35.0	30.0
095.61604.00	2.0	5.0	8.0	25.0	25.0	30.0	35.0	30.0
095.61605.00	2.0	7.0	10.0	15.0	18.0	25.0	28.0	30.0
095.61606.00	2.0	7.0	10.0	18.0	20.0	25.0	28.0	30.0
095.61607.00	2.0	7.0	10.0	20.0	25.0	30.0	28.0	30.0
095.61608.00	2.0	7.0	10.0	22.0	25.0	30.0	35.0	30.0

Other specifications, requirements and customizations can be offered upon request.