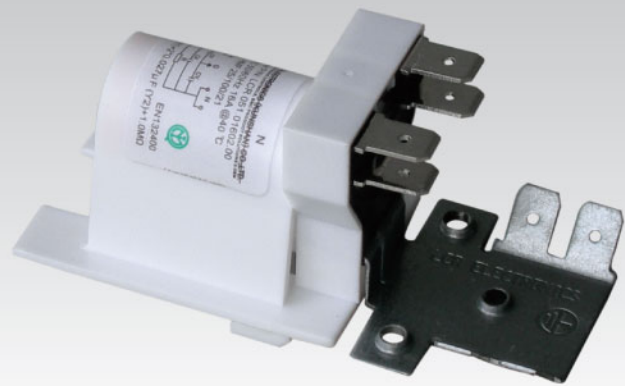


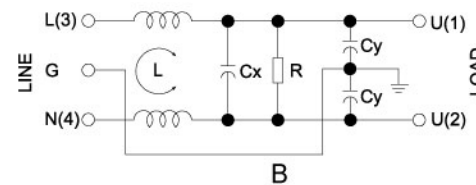
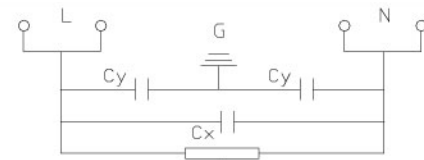
# 095/05/07 Dish Washers and Light White Goods Filters



A 095/05



B 095/07



095/05/07 - Electrical Schematic

## Features

Compact suppression EMI Filters.

## Typical Applications

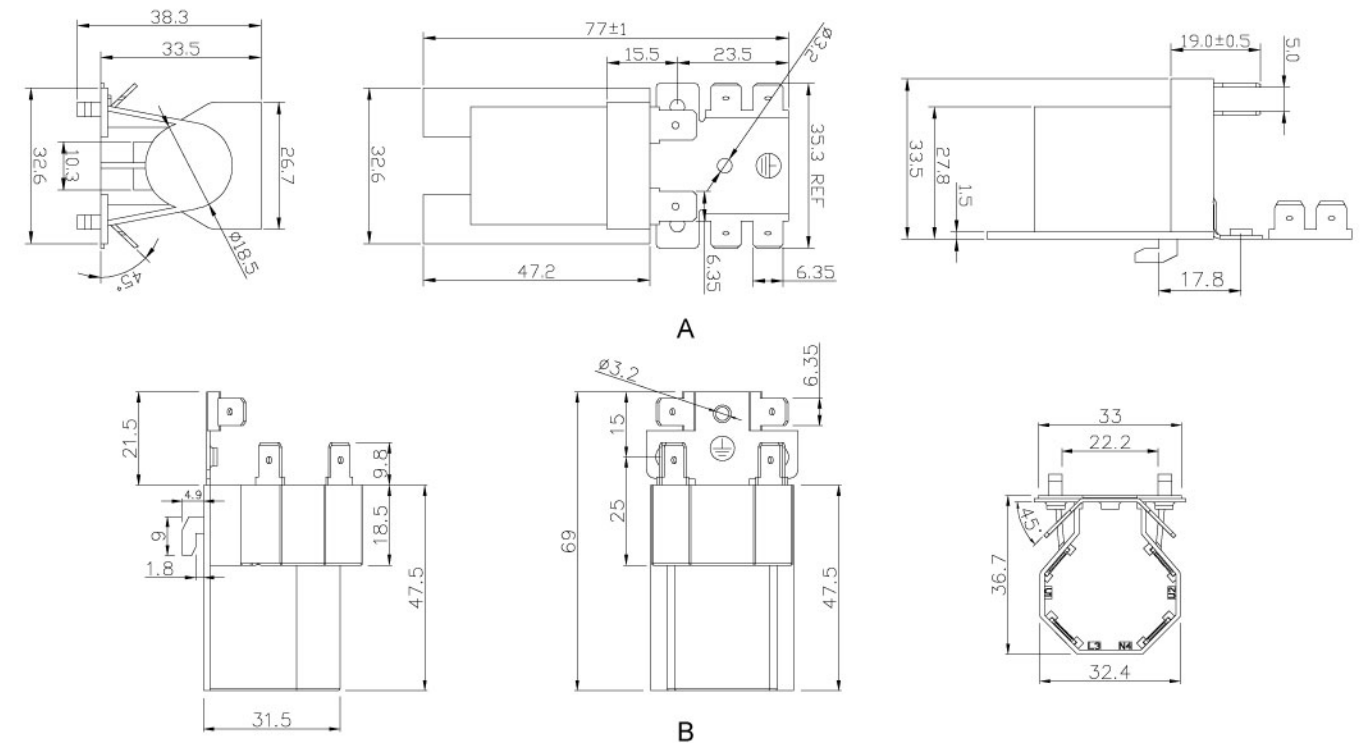
Washing machines, dishwashers and other white goods.

## Technical Data

Rated Voltage Max. (V)	250VAC	Leakage Current	
Rated Current (A)	6 - 16A @ 40°C	@ 250VAC 50Hz	5.09mA Max.
Operating Frequency (Hz)	50 / 60Hz	@ 115VAC 60Hz	2.50mA Max.
Hipot Rating		IP Standard	68
Line to Line	1450V DC	Climatic category	25 / 100 / 21
Line to Ground	2250V DC	Flammability	UL94V-0
Case	Plastic Resin		
Packaging Quantity	200 pcs per carton		

Model No.	Rated Current @ 40°C	Mechanical Diagram	Cx (uF)	Cy (nF)	R (Ω)	Unit Weight (g)	Terminal Options	
							In	Out
095.51001.00	16.0	A	0.1	27.0	1M	33.0	Faston 6.35*0.8	Faston 6.35*0.8
095.51002.00	16.0	A	0.1	25.0	1M	33.0	Faston 6.35*0.8	Faston 6.35*0.8
095.51003.00	16.0	A	0.1	15.0	1M	33.0	Faston 6.35*0.8	Faston 6.35*0.8
095.51004.00	16.0	A	0.1	10.0	1M	33.0	Faston 6.35*0.8	Faston 6.35*0.8
095.51005.00	16.0	A	0.1	4.7	1M	33.0	Faston 6.35*0.8	Faston 6.35*0.8
095.70601.00	6.0	B	0.47	10.0	0.68M	60.0	Faston 6.35*0.8	Faston 6.35*0.8
095.70801.00	8.0	B	0.47	10.0	0.68M	60.0	Faston 6.35*0.8	Faston 6.35*0.8
095.71001.00	10.0	B	0.47	10.0	0.68M	60.0	Faston 6.35*0.8	Faston 6.35*0.8
095.71201.00	12.0	B	0.47	10.0	0.68M	60.0	Faston 6.35*0.8	Faston 6.35*0.8
095.71601.00	16.0	B	0.47	10.0	0.68M	60.0	Faston 6.35*0.8	Faston 6.35*0.8

## 095/05/07 Mechanical Outlines For reference only



All dimensions in mm, 1 inch=25.4 mm

## Insertion Loss in dB Measured in a 50Ω System

Model No.	Common Mode IL (Frequencies in MHz)							
	0.05	0.1	0.15	0.5	1.0	5.0	10.0	30.0
095.51001.00	1.0	1.5	2.0	7.0	12.0	26.0	32.0	35.0
095.51002.00	1.0	1.5	2.0	7.0	10.0	20.0	30.0	32.0
095.51003.00	1.0	1.5	2.0	7.0	10.0	20.0	27.0	30.0
095.51004.00	1.0	1.5	2.0	5.0	10.0	18.0	25.0	28.0
095.51005.00	1.0	1.5	2.0	5.0	8.0	15.0	20.0	25.0
095.70601.00	28.0	30.0	34.0	42.0	58.0	44.0	36.0	32.0
095.70801.00	26.0	28.0	33.0	40.0	56.0	42.0	34.0	31.0
095.71001.00	24.0	26.0	31.0	39.0	53.0	40.0	33.0	29.0
095.71201.00	22.0	24.0	29.0	37.0	49.0	38.0	32.0	27.0
095.71601.00	22.0	24.0	28.0	36.0	46.0	36.0	30.0	26.0

Model No.	Differential Mode IL (Frequencies in MHz)							
	0.05	0.1	0.15	0.5	1.0	5.0	10.0	30.0
095.51001.00	2.0	5.0	8.0	17.0	23.0	37.0	43.0	40.0
095.51002.00	2.0	5.0	8.0	15.0	20.0	37.0	40.0	38.0
095.51003.00	2.0	5.0	8.0	13.0	18.0	35.0	35.0	35.0
095.51004.00	2.0	5.0	7.0	10.0	18.0	33.0	33.0	25.0
095.51005.00	2.0	5.0	7.0	10.0	18.0	30.0	30.0	25.0
095.70601.00	16.0	19.0	26.0	34.0	39.0	46.0	38.0	30.0
095.70801.00	16.0	19.0	26.0	34.0	39.0	46.0	38.0	30.0
095.71001.00	16.0	19.0	26.0	34.0	39.0	46.0	38.0	30.0
095.71201.00	16.0	19.0	26.0	34.0	39.0	46.0	38.0	30.0
095.71601.00	16.0	19.0	26.0	34.0	39.0	46.0	38.0	30.0

Other specifications, requirements and customizations can be offered upon request.

## LCR Electronics, Inc.

9 South Forest Ave, Norristown, PA 19401.  
Tel: +1-610-278-0840 Call: 1-800-LCR4EMC E-mail: sales@lcr-inc.com

