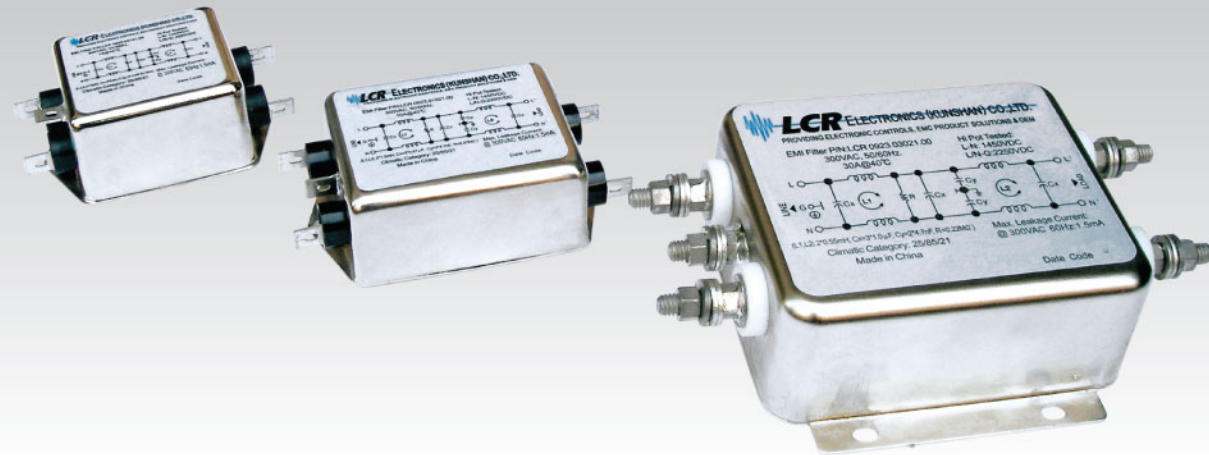


0923/0923M/21 300VAC, General Purpose and Medical Type, Double Stage Filters

RoHS



0923/21 Series

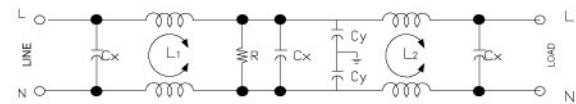
300VAC, Double Stage, Single Phase Filters

Features

High voltage, high performances, wide range double stage power line filters, available with faston, screws, terminal block or wire exit terminals.

Typical Applications

Lighting equipment, medical type applications, industrial applications, controls and communication systems operating at 277VAC and 300VAC.



0923/21 - Electrical Schematic

0923M/21 Series

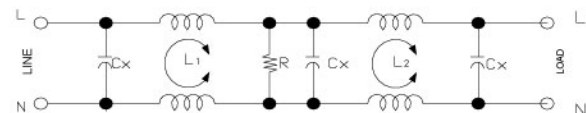
Low Leakage Current, 300VAC, Medical Type, Double Stage, Single Phase Filters

Features

Low leakage current, high voltage, medical type, double stage, single phase power line filters available with faston, screws, terminal block or wire exit terminal.

Typical Applications

Lighting equipment, medical type applications, industrial applications, controls and communication systems operating at 277VAC and 300VAC.



0923M/21 - Electrical Schematic

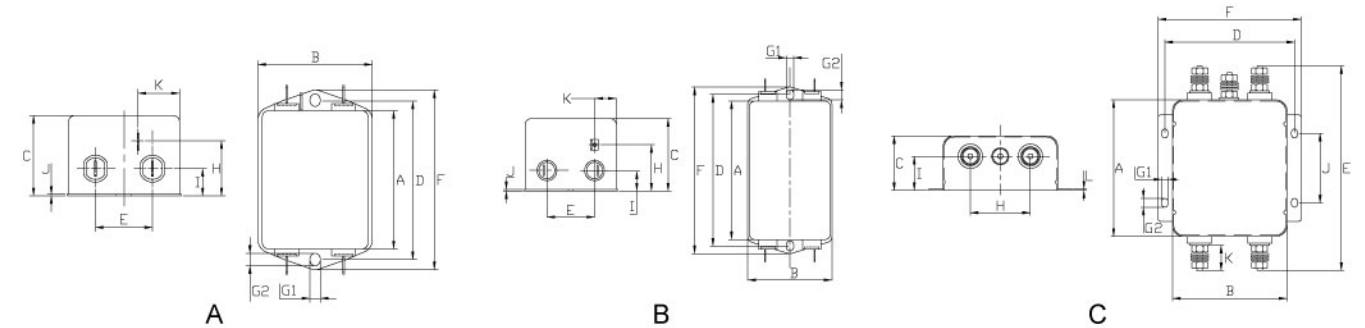
Technical Data

Rated Voltage Max. (V)	300VAC	Leakage Current 0923/21 Series	
Rated Current (A)	1 - 30A @ 40°C	@ 300 VAC 60 Hz	1.5mA Max.
Operating Frequency (Hz)	50 / 60Hz	Leakage Current 0923M/21 Series	
Hipot Rating		@ 300 VAC 60 Hz	5µA Max.
Line to Line	1450V DC	IP Standard	65
Line to Ground	2250V DC	Climatic category	25 / 85 / 21
Case	Plated steel		
Packaging Quantity	60/45 pcs per carton		

0923/21 Model No.	0923M/21 Model No.	Rated Current @ 40°C	Mechanical Diagram	Unit Weight (g)	Terminal Options	
					In	Out
0923.00121.00	0923M.00121.00	1.0	A	152.0	Faston 6.35*0.8 / M4	Faston 6.35*0.8 / M4
0923.00321.00	0923M.00321.00	3.0	A	152.0	Faston 6.35*0.8 / M4	Faston 6.35*0.8 / M4
0923.00721.00	0923M.00721.00	7.0	A	152.0	Faston 6.35*0.8 / M4	Faston 6.35*0.8 / M4
0923.01021.00	0923M.01021.00	10.0	A	215.0	Faston 6.35*0.8 / M4	Faston 6.35*0.8 / M4
0923.01521.00	0923M.01521.00	15.0	A	225.0	Faston 6.35*0.8 / M4	Faston 6.35*0.8 / M4
0923.02021.00	0923M.02021.00	20.0	B	335.0	Faston 6.35*0.8 / M4	Faston 6.35*0.8 / M4
0923.03021.00	0923M.03021.00	30.0	C	850.0	M4 / M6	M4 / M6

Please mark terminal type at the end of the P/N when ordering or inquiring

0923 / 0923M / 21 Mechanical Outlines



0923 / 0923M / 21 Mechanical Dimensions (mm)

For reference only

Model No.	Model No.	A	B	C	D	E	F	G	H	I	J	K
0923.00121.00	0923M.00121.00	51.7	47.5	30.3	62.0	21.0	71.0	5.3*6.3	19.3	12.3	0.6	20.5
0923.00321.00	0923M.00321.00	51.7	47.5	30.3	62.0	21.0	71.0	5.3*6.3	19.3	12.3	0.6	20.5
0923.00721.00	0923M.00721.00	51.7	47.5	30.3	62.0	21.0	71.0	5.3*6.3	19.3	12.3	0.6	20.5
0923.01021.00	0923M.01021.00	65.5	55.0	30.0	75.0	27.0	85.0	5.3*6.3	19.5	12.3	0.6	21.5
0923.01521.00	0923M.01521.00	63.2	52.0	38.0	75.0	25.0	85.0	2.0*4.8	27.5	12.3	0.6	13.5
0923.02021.00	0923M.02021.00	92.5	58.0	41.0	105.0	30.0	115.0	5.0*6.8	29.0	13.0	0.8	13.5
0923.03021.00	0923M.03021.00	100.0	84.0	57.0	95.0	150.6	105.0	4.5*6.5	44.0	37.0	50.8	20.5

All dimensions in mm, 1 inch=25.4 mm

Insertion Loss in dB Measured in a 50Ω System

Model No.	Common Mode IL (Frequencies in MHz)								Model No.	Common Mode IL (Frequencies in MHz)							
	0.05	0.1	0.15	0.5	1.0	5.0	10.0	30.0		0.05	0.1	0.15	0.5	1.0	5.0	10.0	30.0
0923.00121.00	45.0	70.0	80.0	80.0	80.0	80.0	78.0	65.0	0923M.00121.00	45.0	50.0	60.0	60.0	70.0	65.0	60.0	55.0
0923.00321.00	25.0	50.0	55.0	80.0	76.0	60.0	55.0	45.0	0923M.00321.00	25.0	40.0	50.0	50.0	60.0	55.0	50.0	45.0
0923.00721.00	12.0	25.0	45.0	70.0	80.0	66.0	60.0	60.0	0923M.00721.00	12.0	20.0	40.0	40.0	60.0	55.0	45.0	40.0
0923.01021.00	10.0	10.0	30.0	65.0	79.0	72.0	66.0	57.0	0923M.01021.00	10.0	10.0	20.0	40.0	60.0	55.0	50.0	45.0
0923.01521.00	5.0	10.0	20.0	55.0	70.0	80.0	80.0	70.0	0923M.01521.00	5.0	10.0	20.0	40.0	60.0	58.0	50.0	45.0
0923.02021.00	5.0	10.0	20.0	55.0	70.0	65.0	80.0	62.0	0923M.02021.00	5.0	10.0	20.0	40.0	50.0	45.0	42.0	40.0
0923.03021.00	5.0	10.0	20.0	55.0	70.0	65.0	80.0	43.0	0923M.03021.00	5.0	10.0	20.0	40.0	50.0	50.0	45.0	40.0

Model No.	Differential Mode IL (Frequencies in MHz)								Model No.	Differential Mode IL (Frequencies in MHz)							
	0.05	0.1	0.15	0.5	1.0	5.0	10.0	30.0		0.05	0.1	0.15	0.5	1.0	5.0	10.0	30.0
0923.00121.00	10.0	15.0	20.0	70.0	50.0	65.0	70.0	60.0	0923M.00121.00	10.0	15.0	20.0	70.0	50.0	65.0	70.0	60.0
0923.00321.00	10.0	15.0	20.0	70.0	50.0	65.0	70.0	60.0	0923M.00321.00	10.0	15.0	20.0	70.0	50.0	65.0	70.0	60.0
0923.00721.00	10.0	15.0	20.0	70.0	50.0	65.0	70.0	60.0	0923M.00721.00	10.0	15.0	20.0	70.0	50.0	65.0	70.0	60.0
0923.01021.00	15.0	20.0	23.0	45.0	60.0	55.0	55.0	60.0	0923M.01021.00	15.0	20.0	23.0	45.0	60.0	55.0	55.0	60.0
0923.01521.00	15.0	20.0	23.0	45.0	50.0	65.0	55.0	60.0	0923M.01521.00	15.0	20.0	23.0	45.0	50.0	65.0	55.0	60.0
0923.02021.00	20.0	25.0	30.0	60.0	65.0	70.0	72.0	60.0	0923M.02021.00	20.0	25.0	30.0	60.0	65.0	70.0	72.0	60.0
0923.03021.00	20.0	25.0	30.0	50.0	65.0	70.0	75.0	60.0	0923M.03021.00	20.0	25.0	30.0	50.0	65.0	70.0	75.0	60.0

Line to ground capacitors are available up to 4,700 pF.

Other specifications, requirements and customizations can be offered upon request.

LCR Electronics, Inc.

9 South Forest Ave, Norristown, PA 19401.

Tel: +1-610-278-0840 Call: 1-800-LCR4EMC E-mail: sales@lcr-inc.com