

092/092M/21

High Performance Single Phase Double Stage General Purpose and Medical Filters



092/21 Series

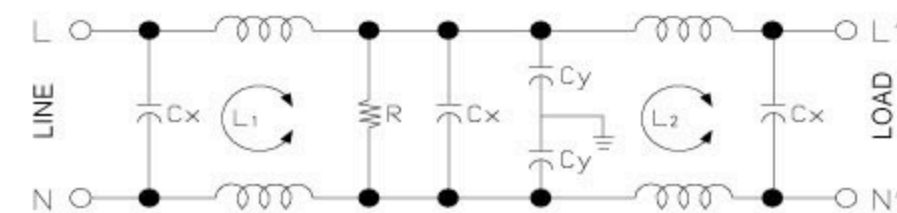
High Performance General Purpose Single Phase Double Stage Filters

Features

High performance, wide range double stage power line filters.

Typical Applications

White goods with frequency inverters, inverter-based control systems.



092/21 - Electrical Schematic

092M/21 Series

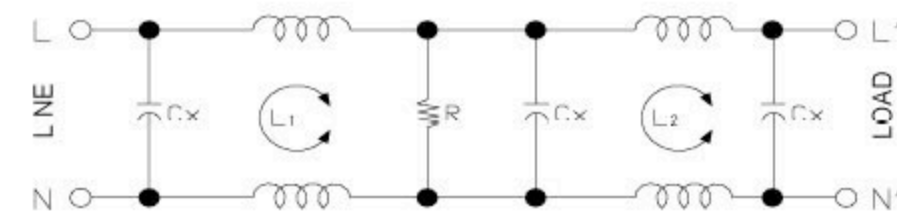
Low Leakage Current Medical High Performance Single Phase Double Stage Filters

Features

Low leakage current, high performance, wide range double stage power line filters.

Typical Applications

Medical equipment, white goods under safety requirements and frequency inverter-based controls and equipment.



092M/21 - Electrical Schematic

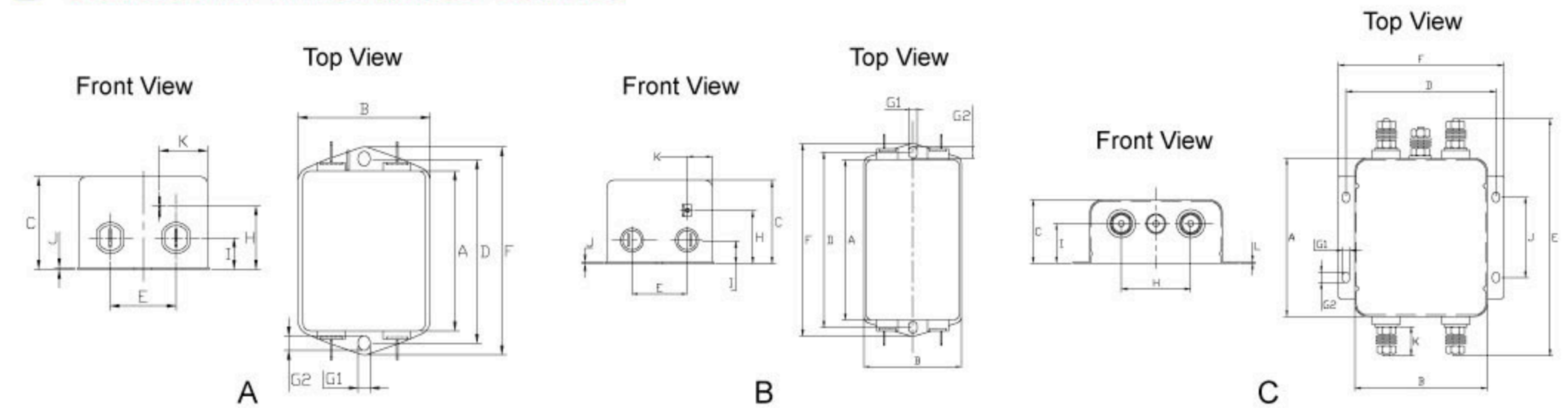
Technical Data

Rated Voltage	250 VAC Max.	Leakage Current 092/21 Series	
Rated Current	1-30 A @ 40°C	@ 250 VAC 50 Hz	0.89 mA Max.
Operating Frequency	50/60 Hz	@ 115 VAC 60 Hz	0.49 mA Max.
Hipot Rating		Leakage Current 092M/21 Series	
Line to Line	1450 VDC	@ 250 VAC 50 Hz	10 µA Max.
Line to Ground	2250 VDC	@ 115 VAC 60 Hz	5 µA Max.
Case	CRS Ni plated	IP Standard	65
Packaging Quantity	60/45 pcs per carton	Climatic category	25/85/21

092/21 Model No.	092M/21 Model No.	Rated Current @ 40°C	Mechanical Diagram	Unit Weight (g)	Terminal Options	
					In	Out
092.00121.00	092M.00121.00	1.0	A	152.0	Faston 6.35*0.8 / M4	Faston 6.35*0.8 / M4
092.00321.00	092M.00321.00	3.0	A	152.0	Faston 6.35*0.8 / M4	Faston 6.35*0.8 / M4
092.00721.00	092M.00721.00	7.0	A	152.0	Faston 6.35*0.8 / M4	Faston 6.35*0.8 / M4
092.01021.00	092M.01021.00	10.0	A	215.0	Faston 6.35*0.8 / M4	Faston 6.35*0.8 / M4
092.01521.00	092M.01521.00	15.0	A	225.0	Faston 6.35*0.8 / M4	Faston 6.35*0.8 / M4
092.02021.00	092M.02021.00	20.0	B	335.0	Faston 6.35*0.8 / M4	Faston 6.35*0.8 / M4
092.03021.00	092M.03021.00	30.0	C	850.0	M4 / M6	M4 / M6

Please mark terminal type at the end of the P/N when ordering or inquiring

092/092M/21 Mechanical Outlines



092/092M/21 Mechanical Dimensions (mm) For reference only

Model No.	Model No.	A	B	C	D	E	F	G	H	I	J	K
092.00121.00	092M.00121.00	51.7	47.5	30.3	62.0	21.0	71.0	5.3*6.3	19.3	12.3	0.6	20.1
092.00321.00	092M.00321.00	51.7	47.5	30.3	62.0	21.0	71.0	5.3*6.3	19.3	12.3	0.6	20.1
092.00721.00	092M.00721.00	51.7	47.5	30.3	62.0	21.0	71.0	5.3*6.3	19.3	12.3	0.6	20.1
092.01021.00	092M.01021.00	65.5	55.0	30.0	75.0	27.0	85.0	5.3*6.3	19.5	12.3	0.6	21.5
092.01521.00	092M.01521.00	63.2	52.0	38.0	75.0	25.0	85.0	2.0*4.8	27.5	12.3	0.6	13.5
092.02021.00	092M.02021.00	92.5	58.0	41.0	105.0	30.0	115.0	5.0*6.8	29.0	13.0	0.8	13.5
092.03021.00	092M.03021.00	100.0	84.0	57.0	95.0	150.6	105.0	4.5*6.5	44.0	37.0	50.8	20.5

All dimensions in mm, 1 inch=25.4 mm

Insertion Loss in dB Measured in a 50Ω System

Model No.	Common Mode IL (Frequencies in MHz)									Model No.	Common Mode IL (Frequencies in MHz)								
	0.05	0.1	0.15	0.5	1.0	5.0	10.0	30.0	45.0		0.05	0.1	0.15	0.5	1.0	5.0	10.0	30.0	
092.00121.00	45.0	70.0	80.0	80.0	80.0	80.0	78.0	65.0		092M.00121.00	45.0	70.0	60.0	60.0	70.0	65.0	60.0	55.0	
092.00321.00	25.0	50.0	55.0	80.0	76.0	60.0	55.0	45.0		092M.00321.00	25.0	50.0	50.0	50.0	60.0	55.0	50.0	45.0	
092.00721.00	12.0	25.0	45.0	70.0	80.0	66.0	60.0	60.0		092M.00721.00	12.0	25.0	40.0	40.0	60.0	55.0	45.0	40.0	
092.01021.00	10.0	10.0	30.0	65.0	79.0	72.0	66.0	57.0		092M.01021.00	10.0	10.0	20.0	40.0	60.0	55.0	50.0	45.0	
092.01521.00	5.0	10.0	20.0	55.0	70.0	80.0	80.0	70.0		092M.01521.00	5.0	10.0	20.0	40.0	60.0	58.0	50.0	45.0	
092.02021.00	5.0	10.0	20.0	55.0	70.0	65.0	80.0	62.0		092M.02021.00	5.0	10.0	20.0	40.0	50.0	45.0	42.0	40.0	
092.03021.00	5.0	10.0	20.0	55.0	70.0	65.0	80.0	43.0		092M.03021.00	5.0	10.0	20.0	40.0	50.0	50.0	45.0	40.0	

Model No.	Differential Mode IL (Frequencies in MHz)									Model No.	Differential Mode IL (Frequencies in MHz)								
	0.05	0.1	0.15	0.5	1.0	5.0	10.0	30.0	45.0		0.05	0.1	0.15	0.5	1.0	5.0	10.0	30.0	
092.00121.00	10.0	15.0	20.0	70.0	50.0	65.0	70.0	60.0		092M.00121.00	10.0	15.0	20.0	70.0	50.0	65.0	70.0	60.0	
092.00321.00	10.0	15.0	20.0	70.0	50.0	65.0	70.0	60.0		092M.00321.00	10.0	15.0	20.0	70.0	50.0	65.0	70.0	60.0	
092.00721.00	10.0	15.0	20.0	70.0	50.0	65.0	70.0	60.0		092M.00721.00	10.0	15.0	20.0	70.0	50.0	65.0	70.0	60.0	
092.01021.00	15.0	20.0	23.0	45.0	60.0	55.0	55.0	60.0		092M.01021.00	15.0	20.0	23.0	45.0	60.0	55.0	55.0	60.0	
092.01521.00	15.0	20.0	23.0	45.0	50.0	65.0	55.0	60.0		092M.01521.00	15.0	20.0	23.0	45.0	50.0	65.0	55.0	60.0	
092.02021.00	20.0	25.0	30.0	60.0	65.0	70.0	72.0	60.0		092M.02021.00	20.0	25.0	30.0	60.0	65.0	70.0	72.0	60.0	
092.03021.00	20.0	25.0	30.0	50.0	65.0	70.0	75.0	60.0		092M.03021.00	20.0	25.0	30.0	50.0	65.0	70.0	75.0	60.0	

- Line to ground capacitors are available up to 4,700 pF.
- Other specifications, requirements and customizations can be provided upon request.