

# 0913/0913M 300VAC, General Purpose and Medical Type, Single Stage Filter

RoHS



## 0913 Series

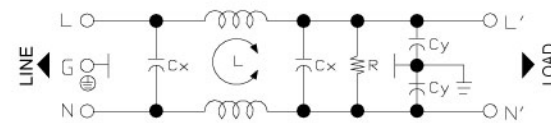
300VAC, Single Stage, Single Phase Filters

### Features

High voltage, single stage, single phase power line filters, available with faston, screws, terminal block or wire exit terminals.

### Typical Applications

Lighting equipment, medical type applications, industrial applications, controls and communication systems operating at 277VAC and 300VAC.



0913 - Electrical Schematic

## 0913M Series

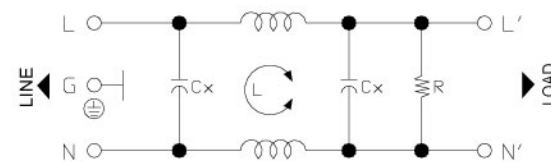
Low leakage current, 300VAC, Single Stage, Single Phase Medical Type Filters

### Features

Low leakage current, high voltage, medical type, single stage, single phase power line filters, available with faston, screws, terminal block or wire exit terminal.

### Typical Applications

Lighting equipment, medical type applications, industrial applications, controls and communication systems operating at 277VAC and 300VAC.



0913M - Electrical Schematic

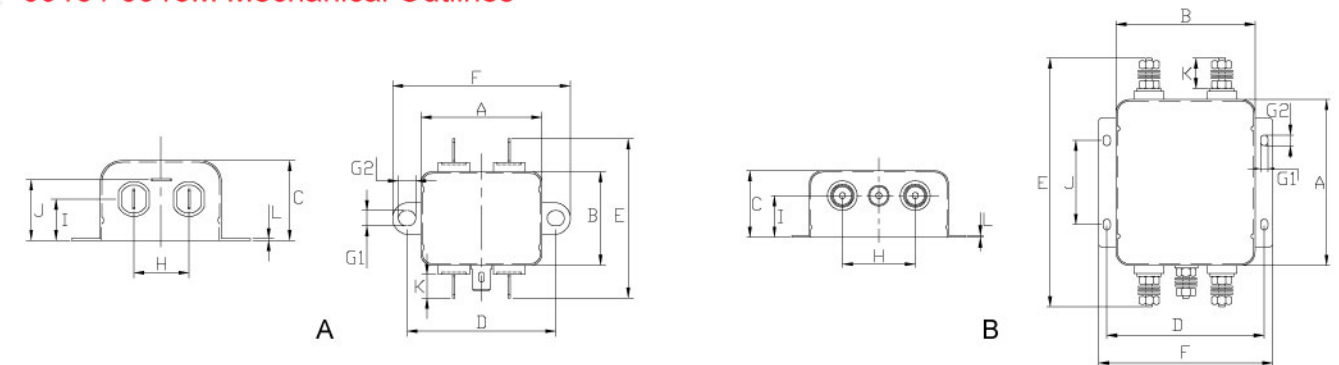
## Technical Data

Rated Voltage Max. (V)	300VAC	Leakage Current 0913 Series	
Rated Current (A)	1 - 40A @ 40°C	@ 300 VAC 60 Hz	0.6mA Max.
Operating Frequency (Hz)	50 / 60Hz	Leakage Current 0913M Series	
Hipot Rating		@ 300 VAC 60 Hz	5µA Max.
Line to Line	1450V DC	IP Standard	65
Line to Ground	2250V DC	Climatic category	25 / 85 / 21
Case	Plated steel		
Packaging Quantity	108/50/16 pcs per carton		

0913 Model No.	0913M Model No.	Rated Current @ 40°C	Mechanical Diagram	Unit Weight (g)	Terminal Options	
					In	Out
0913.00101.00	0913M.00101.00	1.0	A	80.0	Faston 6.35*0.8 / M4	Faston 6.35*0.8 / M4
0913.00301.00	0913M.00301.00	3.0	A	84.0	Faston 6.35*0.8 / M4	Faston 6.35*0.8 / M4
0913.00601.00	0913M.00601.00	6.0	A	88.0	Faston 6.35*0.8 / M4	Faston 6.35*0.8 / M4
0913.01001.00	0913M.01001.00	10.0	A	151.0	Faston 6.35*0.8 / M4	Faston 6.35*0.8 / M4
0913.01501.00	0913M.01501.00	15.0	A	160.0	Faston 6.35*0.8 / M4	Faston 6.35*0.8 / M4
0913.02001.00	0913M.02001.00	20.0	A	160.0	Faston 6.35*0.8 / M4	Faston 6.35*0.8 / M4
0913.02501.00	0913M.02501.00	25.0	B	701.0	M4 / M6	M4 / M6
0913.03001.00	0913M.03001.00	30.0	B	742.0	M6	M6
0913.04001.00	0913M.04001.00	40.0	B	759.0	M6	M6

Please mark terminal type at the end of the P/N when ordering or inquiring

## 0913 / 0913M Mechanical Outlines



## 0913 / 0913M Mechanical Dimensions (mm)

For reference only

Model No.	Model No.	A	B	C	D	E	F	G	H	I	J	K
0913.00101.00	0913M.00101.00	44.0	33.0	29.0	54.0	56.8	64.0	2-Φ5.3*6.3	20.0	15.0	22.0	8.5
0913.00301.00	0913M.00301.00	44.0	33.0	29.0	54.0	56.8	64.0	2-Φ5.3*6.3	20.0	15.0	22.0	8.5
0913.00601.00	0913M.00601.00	44.0	33.0	29.0	54.0	56.8	64.0	2-Φ5.3*6.3	20.0	15.0	22.0	8.5
0913.01001.00	0913M.01001.00	51.0	52.0	29.0	61.0	75.8	71.0	2-Φ5.3*6.3	20.0	14.0	22.0	8.5
0913.01501.00	0913M.01501.00	51.0	52.0	29.0	61.0	75.8	71.0	2-Φ5.3*6.3	20.0	14.0	22.0	8.5
0913.02001.00	0913M.02001.00	51.0	52.0	29.0	61.0	75.8	71.0	2-Φ5.3*6.3	20.0	14.0	22.0	8.5
0913.02501.00	0913M.02501.00	100.0	84.0	40.0	95.0	150.6	105.0	4-Φ4.5*6.5	44.0	25.0	50.8	20.5
0913.03001.00	0913M.03001.00	100.0	84.0	40.0	95.0	150.6	105.0	4-Φ4.5*6.5	44.0	25.0	50.8	20.5
0913.04001.00	0913M.04001.00	100.0	84.0	40.0	95.0	150.6	105.0	4-Φ4.5*6.5	44.0	25.0	50.8	20.5

All dimensions in mm, 1 inch=25.4 mm

## Insertion Loss in dB Measured in a 50Ω System

Model No.	Common Mode IL (Frequencies in MHz)								Model No.	Common Mode IL (Frequencies in MHz)							
	0.05	0.1	0.15	0.5	1.0	5.0	10.0	30.0		0.05	0.1	0.15	0.5	1.0	5.0	10.0	30.0
0913.00101.00	21.0	27.0	31.0	43.0	52.0	52.0	50.0	50.0	0913M.00101.00	21.0	27.0	31.0	41.0	48.0	50.0	50.0	45.0
0913.00301.00	21.0	25.0	29.0	41.0	50.0	50.0	50.0	50.0	0913M.00301.00	21.0	27.0	31.0	41.0	48.0	50.0	50.0	45.0
0913.00601.00	16.0	21.0	25.0	37.0	45.0	45.0	45.0	40.0	0913M.00601.00	16.0	21.0	25.0	35.0	42.0	40.0	40.0	40.0
0913.01001.00	13.0	19.0	23.0	35.0	43.0	43.0	43.0	40.0	0913M.01001.00	13.0	19.0	22.0	33.0	39.0	35.0	35.0	35.0
0913.01501.00	10.0	16.0	19.0	31.0	40.0	40.0	40.0	40.0	0913M.01501.00	10.0	16.0	19.0	29.0	35.0	30.0	30.0	30.0
0913.02001.00	10.0	16.0	19.0	31.0	40.0	40.0	40.0	40.0	0913M.02001.00	10.0	16.0	19.0	29.0	35.0	30.0	30.0	30.0
0913.02501.00	8.0	13.0	17.0	28.0	38.0	38.0	38.0	35.0	0913M.02501.00	8.0	13.0	16.0	27.0	33.0	30.0	30.0	30.0
0913.03001.00	8.0	13.0	17.0	28.0	38.0	38.0	38.0	35.0	0913M.03001.00	5.0	10.0	13.0	23.0	30.0	28.0	28.0	28.0
0913.04001.00	5.0	10.0	13.0	25.0	34.0	34.0	34.0	30.0	0913M.04001.00	5.0	10.0	13.0	23.0	30.0	28.0	28.0	28.0

Model No.	Differential Mode IL (Frequencies in MHz)								Model No.	Differential Mode IL (Frequencies in MHz)							
	0.05	0.1	0.15	0.5	1.0	5.0	10.0	30.0		0.05	0.1	0.15	0.5	1.0	5.0	10.0	30.0
0913 Series	5.0	10.0	13.0	23.0	30.0	35.0	35.0	35.0	0913M Series	5.0	10.0	13.0	23.0	30.0	35.0	35.0	35.0

Line to ground capacitors are available up to 4,700 pF.

Other specifications, requirements and customizations can be offered upon request.

LCR Electronics, Inc.

9 South Forest Ave, Norristown, PA 19401.

Tel: +1-610-278-0840 Call: 1-800-LCR4EMC E-mail: sales@lcr-inc.com

**LCR ELECTRONICS, INC.**  
ENGINEERED PRODUCT SOLUTIONS IN A CUSTOMER FOCUSED CULTURE  
www.lcr-inc.com