

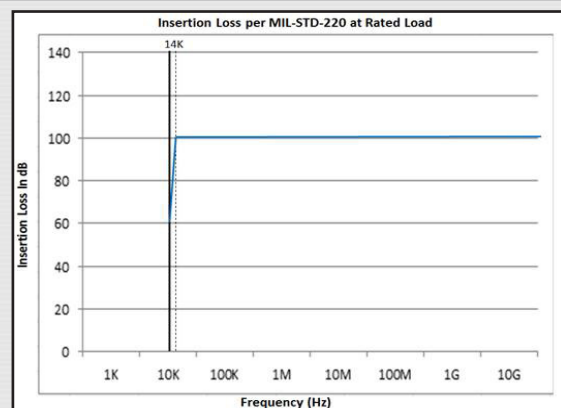
F Series Power Line Filters

Single and Dual Line 100dB @ 14 KHz
Facility/Shielded Room Power Line Filters

EMI FILTERS



LCR's EMI filter capabilities can help your products meet all the EMC requirements and achieve "Mission Success" in the critical applications. We are a global leader in EMI filters offering advance filter design, engineering, manufacturing, testing and top notch technical support.



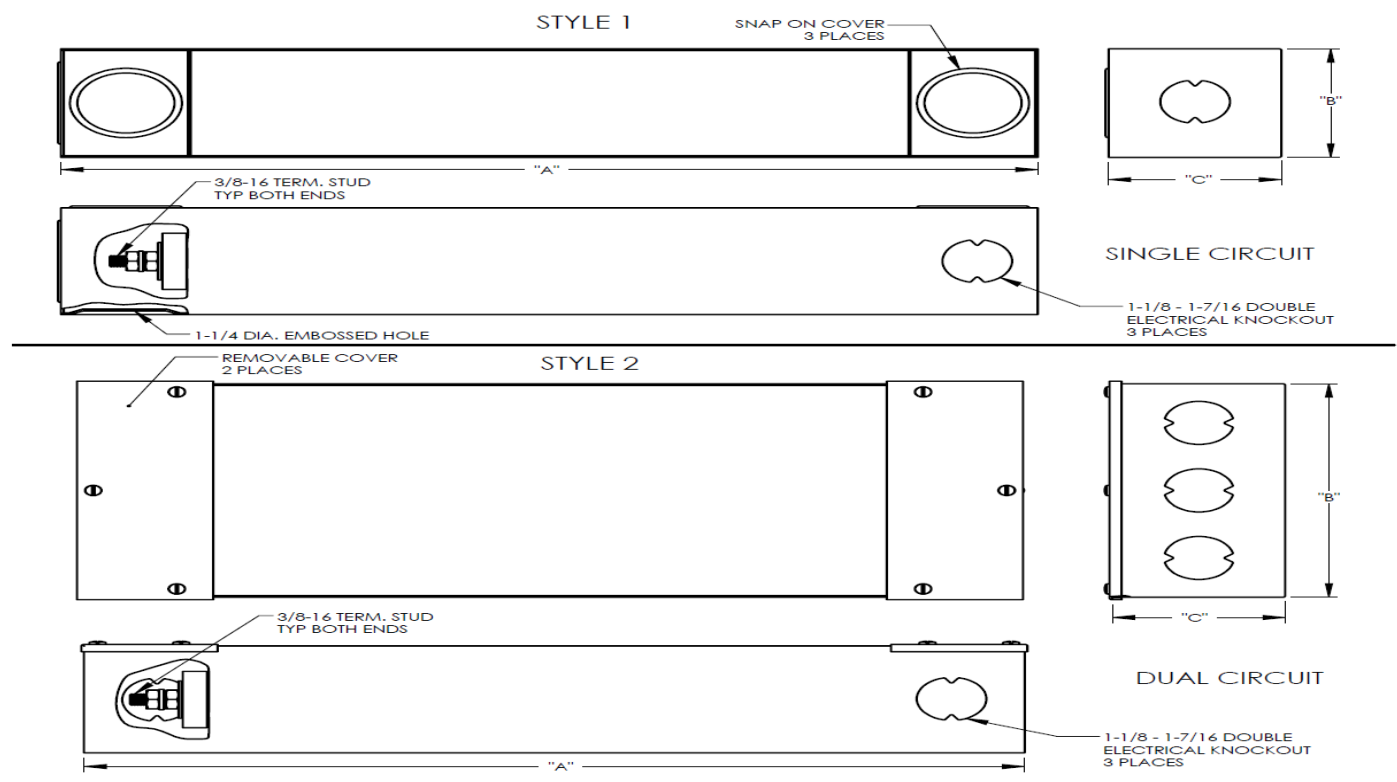
General Specifications

- Attenuation (insertion loss) is 100dB @ 14KHz to 10GHz measured according to MIL-STD-220. Filter insertion loss will extend to 40 GHz when installed with proper EMI shielding and isolation.
- Filters can be supplied with various levels of transient voltage protection (EMP, HEMP, and HERF.)
- Filter cabinets supplied with two separate removable covers to access input and output terminals. The output compartment is supplied with an EMI (RF) non- corrosive, environmental gasket to prevent RF Leakage and accommodate maximum isolation between input and output compartments. The input compartment is supplied with a moisture resistant gasket.
- LCR Power Line Filters comply with all the applicable requirements of MIL-PRF-15733 latest revision, MIL-STD 810 and UL1283.
- Bleeder resistors are built into each filter line to discharge the capacitor voltage to ground potential during power shutdown.
- Designed to operate continuously at rated currents and voltages, and are capable of withstanding a 40% current overload for 15 minutes without degradation.
- Voltage drop across each filter line at room temperature and full rated current is less than 1%.
- Electrical Specifications - 120/208 or 277/480VAC, 50/60Hz **.
- Finish: Yellow Zinc Chromate Plating (conductive) with Gray Enamel Paint, no paint on rear mounting surface.

► **F Series Shielded Room Filters, 100dB@14KHz**

Power Line Filters

SPECIFICATIONS



Part No.	Current Amps	Voltage Vac	Mechanical Dimensions in Inches (mm)			
			A	B	C	STYLE
F1960	20	277/480	19.38 (492.25)	3.63 (92.20)	3.56 (90.42)	1
F1961	30	277/480	20.13 (511.30)	3.63 (92.20)	3.56 (90.42)	1
F1962	50	277/480	26.50 (673.10)	3.63 (92.20)	3.56 (90.42)	1
F1963	75	277/480	26.50 (673.10)	3.63 (92.20)	3.56 (90.42)	1
F1964	100	277/480	28.88 (733.55)	4.00 (101.60)	4.00 (101.60)	1
F19323	200	277/480	48.00 (1219.20)	8.00 (203.20)	8.00 (203.20)	1
F19324	400	345/600	48.00 (1219.20)	8.00 (203.20)	10.50 (266.70)	1
F1965	2 x 20	277/480	19.38 (492.25)	7.13 (181.10)	3.56 (90.42)	2
F1966	2 x 30	277/480	20.13 (511.30)	7.13 (181.10)	3.56 (90.42)	2
F1967	2 x 50	277/480	26.50 (673.10)	7.13 (181.10)	3.56 (90.42)	2
F1968	2 x 75	277/480	26.50 (673.10)	7.13 (181.10)	3.56 (90.42)	2
F1969	2 x 100	277/480	28.88 (733.55)	8.00 (203.20)	4.00 (101.60)	2

For custom specifications or a variation to above products, please contact our application engineering. We will customize our designs to meet your specifications and fit your needs.

** Dimensions shown above are for reference purposes only. Specifications subject to change.*

*** Filters up to 75A can be used in 400Hz application for max line voltage of 120/208VAC when used with external Power Factor Correction coil. Above 75A, filters require slight modification, please contact us.*

WARRANTY

LCR provides a limited one-year warranty for its products. A copy of the complete warranty plus other terms and conditions of sale are available upon request.